



J•DRAIN

J•Barrier

Green Roof Drainage Systems

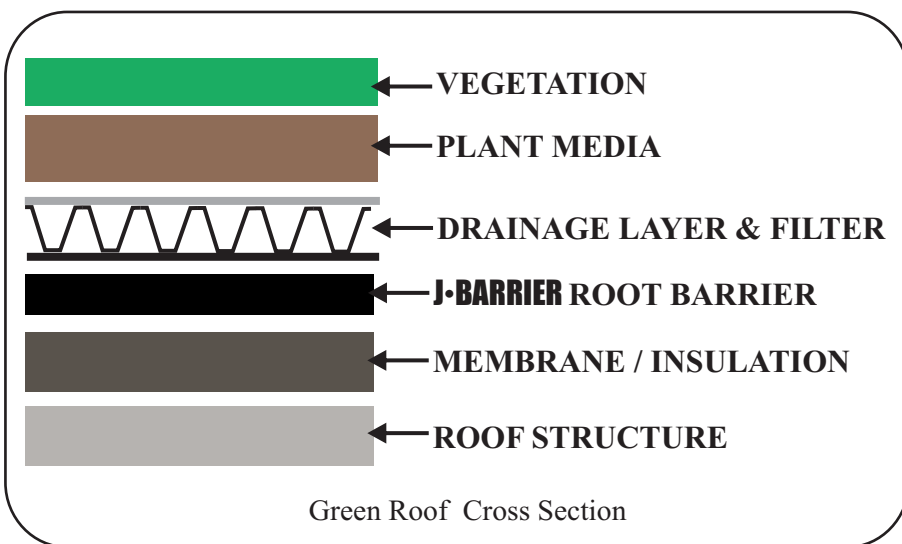
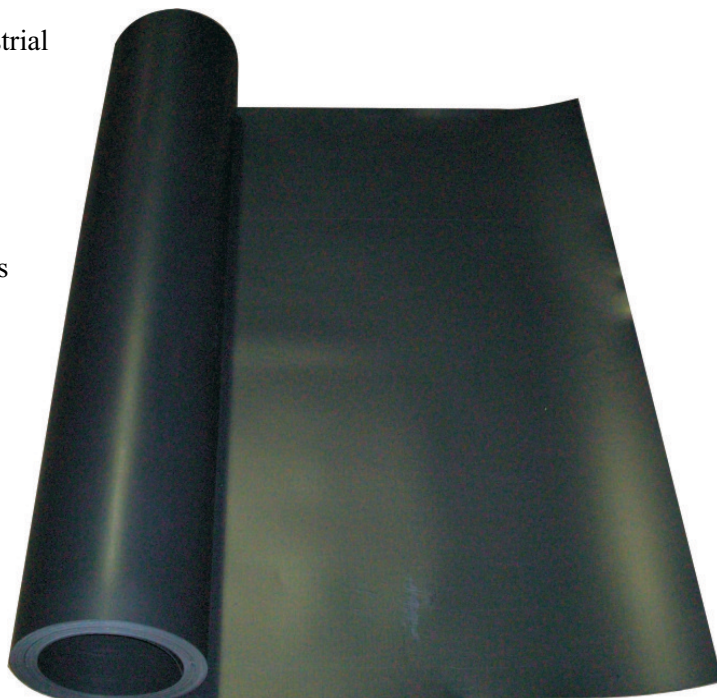
Product Description:

J-Barrier is a solid sheet of 20 mil (0.51mm) 100% post-industrial polystyrene regrind. Each roll is 4' wide x 100' long (400 square-feet/roll).

One of the primary objectives of a greenroof is to ensure the integrity of the waterproofing system and the supporting structure. A root barrier is a required component and is generally located within or at the membrane. Most membranes (i.e. hot applied rubberized asphalt, cold fluid applied, built-up bitumen, and modified bitumen) will require a root barrier to repel roots.

Installation:

When used in conjunction with asphalt and bituminous waterproofing membranes and in assemblies with over 6" depth of growing medium, FM Global requires the use of a root barrier with a thickness of at least 0.03" (0.8mm). They require seams be lapped by 6" (150 mm), welded a minimum of 1.5" (38 mm), and tested. For projects not requiring FM Global Standards, seams can be overlapped and secured using J-Tape, a waterproofing tape.



Physical Properties

Material:	Polystyrene
Width:	4'
Length:	100'
Thickness:	20 mil (0.51mm)

APPLICATIONS:

- GREENROOFS
- PLANTERS

The information contained herein is believed by JDR Enterprises, Inc. to be accurate and is offered solely for the customer's consideration, investigation and verification. Determination of suitability for use is the responsibility of the user. JDR's Limitations, Limited Warranty, & Disclaimer along with Standard Terms & Conditions apply. See www.j-drain.com for more info. Limitations: J-DRain is resistant to chemicals in normal soil environments. However, some reagents may affect the performance of J-DRain. A JDR representative should be contacted for further information to determine the suitability of use of J-DRain in unusual soil environments. J-DRain should be limited to its exposure to ultra-violet sunlight. J-DRain should be backfilled or covered within seven days of installation. Disclaimer: All information, drawings and specifications are based on the latest published information at the time of printing. JDR reserves the right to make changes due to manufacturing improvements and engineering at any time. All physical properties are minimum average roll values (MARV). Standard variations of 10% in mechanical properties and 15% in hydraulic properties are normal.

Distributed By:



www.centralconstructionsupply.com
(800) 950-4972